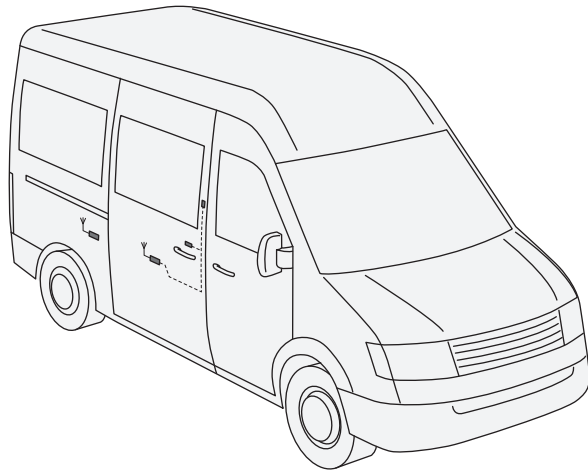


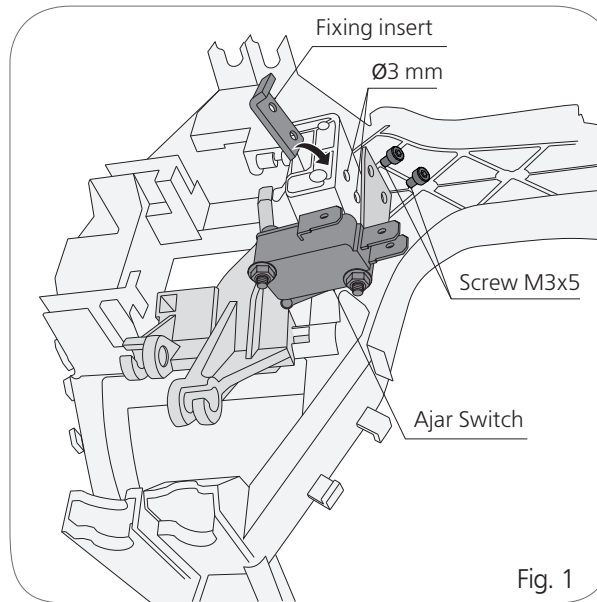
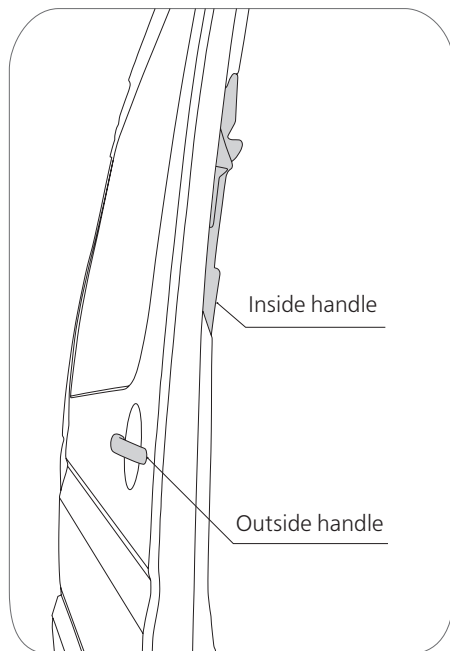


# MANUAL

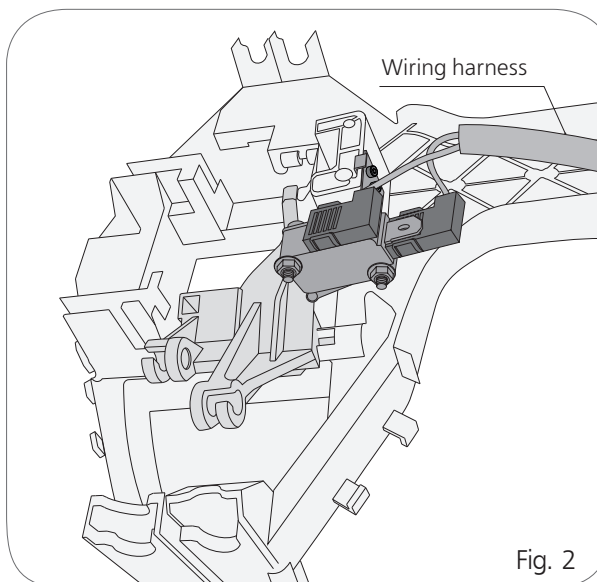
## DRIVE CONTROL MODULE OF MERCEDES 2 DOOR HANDLES



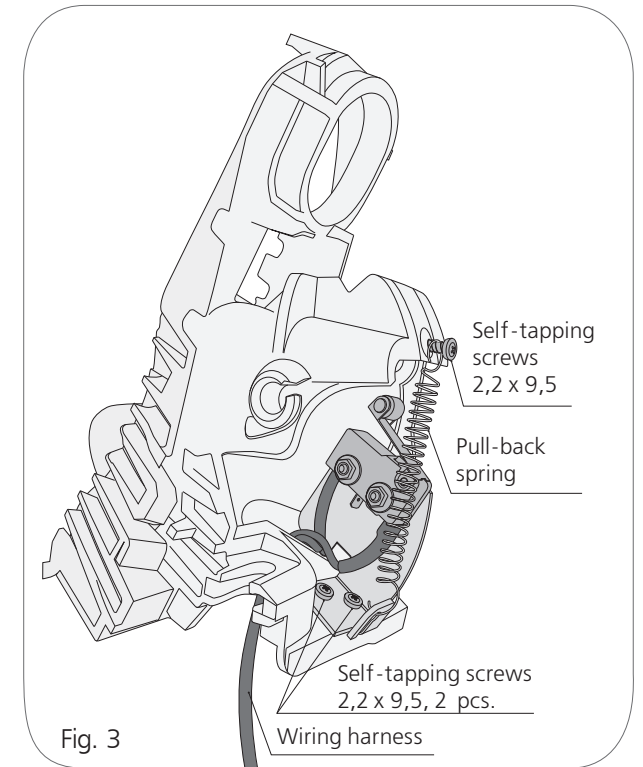
MERCEDES SPRINTER (906) /  
VOLKSWAGEN CRAFTER 2006 - 2018



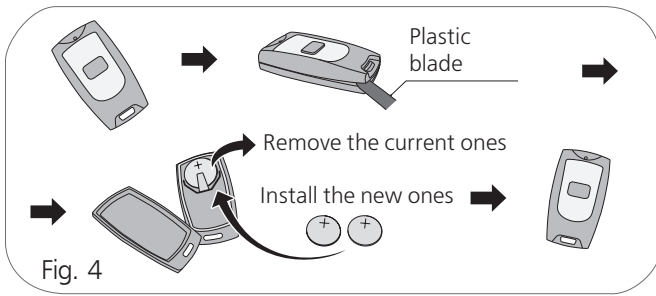
Detach the outside handle of the sliding door. Make two holes Ø3 mm as shown in Fig. 1. Fix the ajar switch with two screws M3x5 using the fixing insert (Fig. 1).



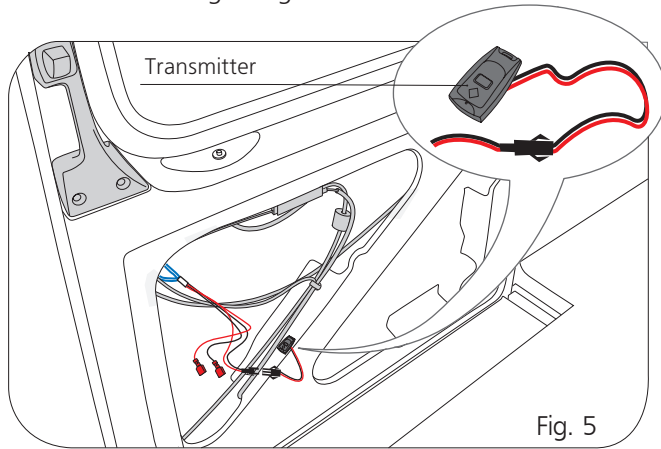
Connect the wire harness to the ajar switch contacts, as shown in Fig. 2. Place the handle back.



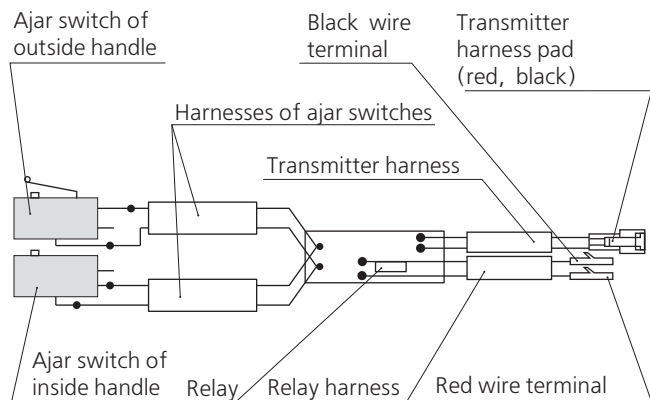
Detach the inside handle of the sliding door. Screw up the ajar switch on it with two self-tapping screws 2.2 x 9.5 and screw in a self-tapping screw 2.2 x 9.5 to fix the pull-back spring, as shown in Fig. 3. Connect the wiring harness to the contacts of the ajar switch, as shown in Fig. 3. Place the handle back.



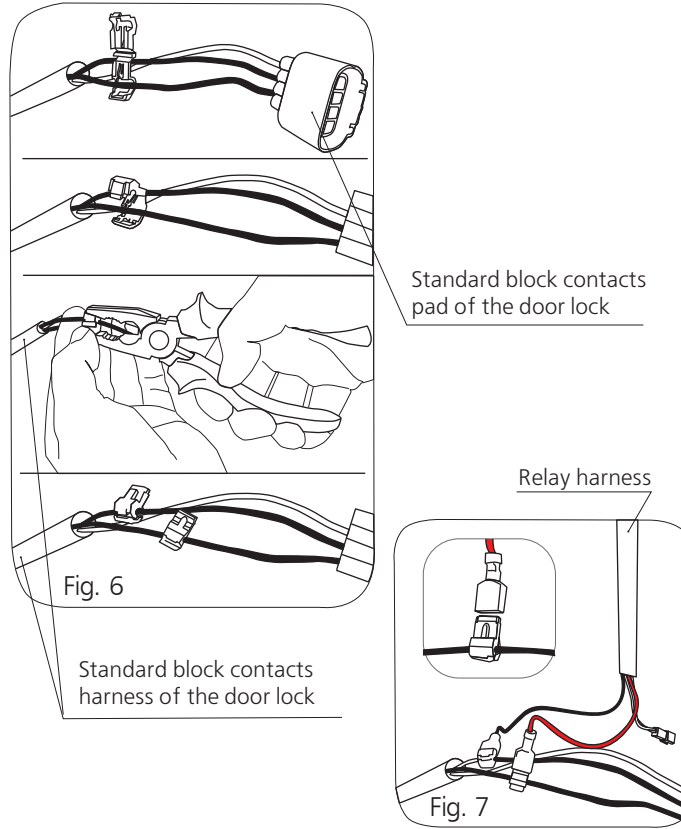
Before operation start change batteries. For transmitter two batteries CR2016 3V are needed. Change the batteries according to fig. 4



In the indicated place in fig. 5 fix the transmitter of the control module with bi-adhesive 3M. Pull the ajar switch wires towards it.



Connect the transmitter harness to the transmitter, as shown in fig. 5, whereas the relay harness to the standard block contacts harness of the door lock, as shown in fig. 7. Connect the set-in contacts to two black wires of the standard blocking pad of the door lock, as shown in Fig. 6. Connect two terminals of the red and black wires of the relay harness to the set-in contacts, as shown in fig. 7.



**ATTENTION**  
 Provided that all wires connected correctly, the led lamp in transmitter should flash up and go out. To do this, it is necessary to pull any of the handles. When standard blocking of the door lock is switched on, the led lamp in the transmitter must not flash up if you pull the handle outside.

Connect receiver with controller in accordance with the drive in use: for Tros drive (fig. 8), for Kroko drive to controllers 101, 102 (fig. 9), 107 (fig. 10), for Cayman drive (fig. 11).

